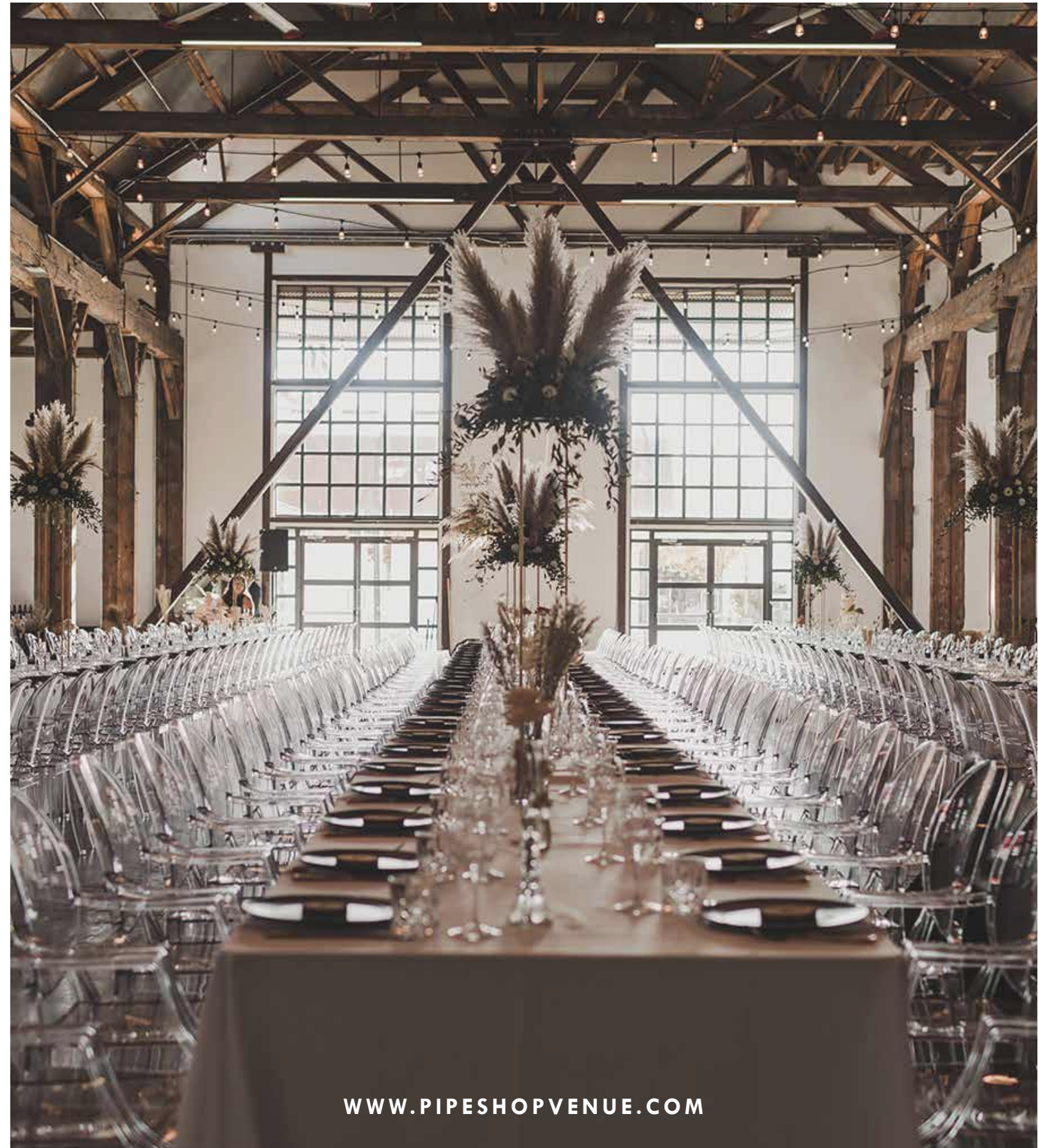


PIPE SHOP VENUE

— AT THE SHIPYARDS —



WWW.PIPESHOPVENUE.COM



LIABILITY INSURANCE

The occupant must obtain and show proof of \$5 million in general liability insurance and list Quay Property Management Corporation and The City of North Vancouver as additionally insured.

RENTALS

The space is a blank canvas, it does not come with tables or chairs, there is no ladder on-site. Professional experienced wedding and/or event planners are required at each event, our preferred vendors are listed in this package.

BAR MANAGEMENT

The Venue allows for client's to purchase their own alcoholic beverages and special events permit, but all alcohol must be served by either our preferred bar service company or one of our exclusive caterers.

NOISE RESTRICTIONS

The Venue is located in a residential area, therefore, all events must end at 11:00 pm. Tear down of all items must take place that night and everything that was brought in must be removed. The venue must be completely empty and in the same condition it was received, by 1:00 am at the latest.

PREFERRED VENDORS

WEDDING & EVENT PLANNERS

Clearwater Events & Weddings: www.clearwaterevents.org

Elyse & Co. Events.: www.elyseandco.ca

Filosophi: info@filosophi.com

Petite Pearl: www.petitepearlevents.com

Smitten Events: info@smittenevents.ca

Sweetheart Events: savethedate@sweetheartevents.ca

RENTALS + DECOR

A & B Partytime Rentals Ltd.: sales@abpartytime.com

Bespoke Decor: hello@bespokedecor.ca

Bold Event Creative: heather@boldeventcreative.com

Debut Event Design: info@debuteventdesign.ca

Koncept Event Design: Koncept.vancouver@gmail.com

Lonsdale Event Rentals: events@lonsdaleevents.com

Lounge Works: simona@loungeworks.ca

Pedersen's Event Rentals: www.vancouver.pedersens.com

EXCLUSIVE CATERING

Cocktails & Canapes: www.cocktailsandcanapes.ca

Forage: www.foragevancouver.com

Louis Gervais Catering: www.louisgervaiscatering.com

Peake of Catering: www.peakeofcatering.com

Pinnacle Hotel at the Pier: www.meetpinnacle.ca/ph/catering

Railtown Catering: www.railtowncatering.ca

Savoury Chef: www.savourychef.com

Served Catering: www.servedcatering.com

Truffles Fine Foods: www.trufflesfinefoods.com

White Table Catering: www.whitetablecatering.com

BAR SERVICE

Lavish Liquid: www.lavishliquid.com

A/V

Clark's AV: www.clarksav.com

McHugh Productions: www.mchughproductions.com

ACCOMMODATION

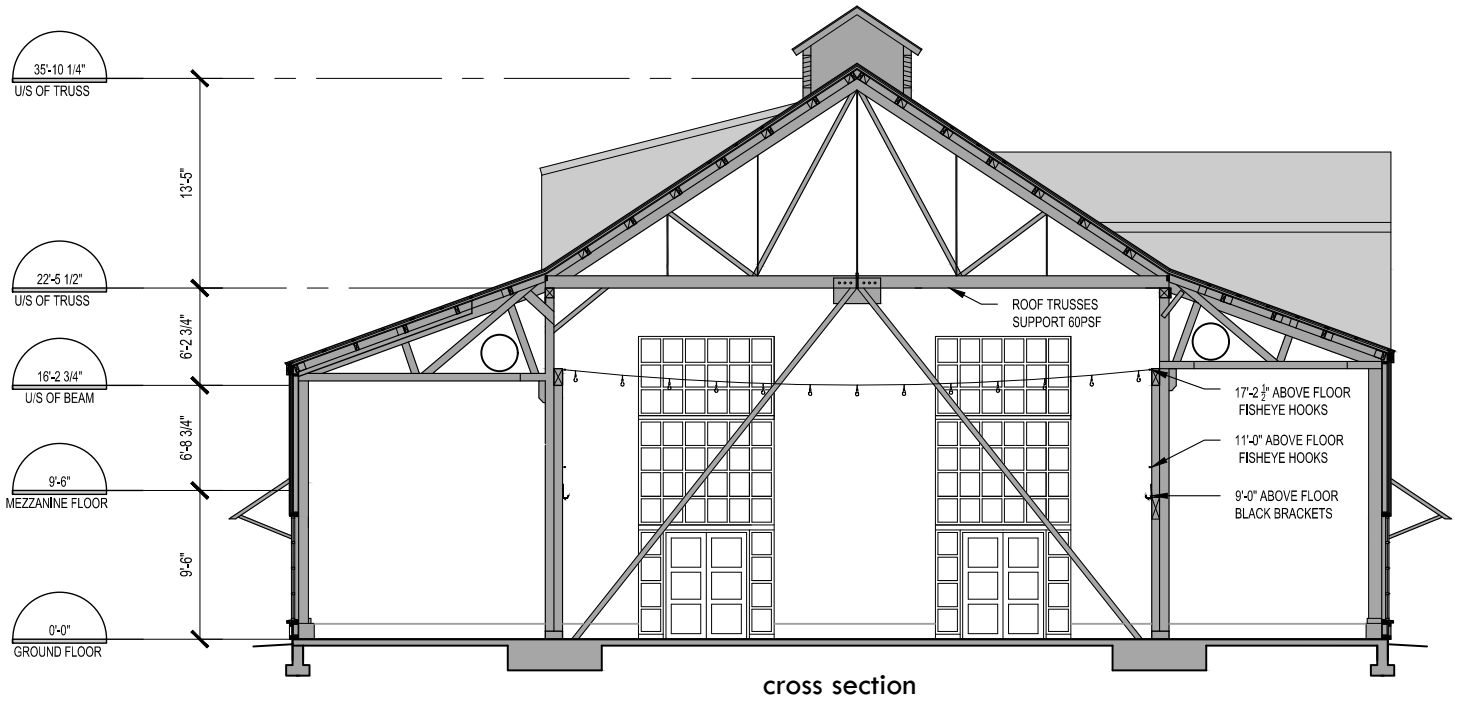
Pinnacle Hotel at the Pier: www.pinnaclepierhotel.com

Seaside Executive Hotel: www.seasidehotelvancouver.com

Lonsdale Quay Hotel: www.lonsdalequayhotel.com



FLOOR PLAN



NEIGHBOURHOOD



LOWER LONSDALE

The Pipe Shop is conveniently located near the waterfront in the vibrant Lower Lonsdale area, adjacent to the Pinnacle Hotel, Pier 7 restaurant and Tap & Barrel. The Venue is a 5 minute walk from the SeaBus terminal and bus loop. Parking is available on Wallace Mews, in The Shipyards parking lot, and in the Pinnacle Hotel. The area is home to many concerts, festivals, and community events throughout the year.

THE SHOPYARDS

Located just next door to the Pipe Shop, this brand new development is over 84,000 square feet of mixed-use commercial and community amenity space, including a new boutique waterfront hotel, restaurants, specialty shops, as well as an outdoor public ice skating rink and children's spray park.

THE WALLACE

Our sister venue, The Wallace, is a beautiful industrial vene in The Shipyards. Featuring an expansive 2400 square foot terrace and a capacity of 200 guests, The Wallace has the best views in the City. Visit www.wallacevenue.com for more information.





115 Victory Ship Way, North Vancouver
604.676.4063 | www.pipeshopvenue.com
@pipeshop_venue

Photo credits: Sheer Joy Photography (cover)
Lily Ann Photography (p.2 & p.5, top)
Jeremy Wee Photography (p.3, L) The Apartment (p.3, R & p.6)
Blush Sky Photography (p.4), Love Frankly (p.5, bottom)

Owned By:  Managed By: 