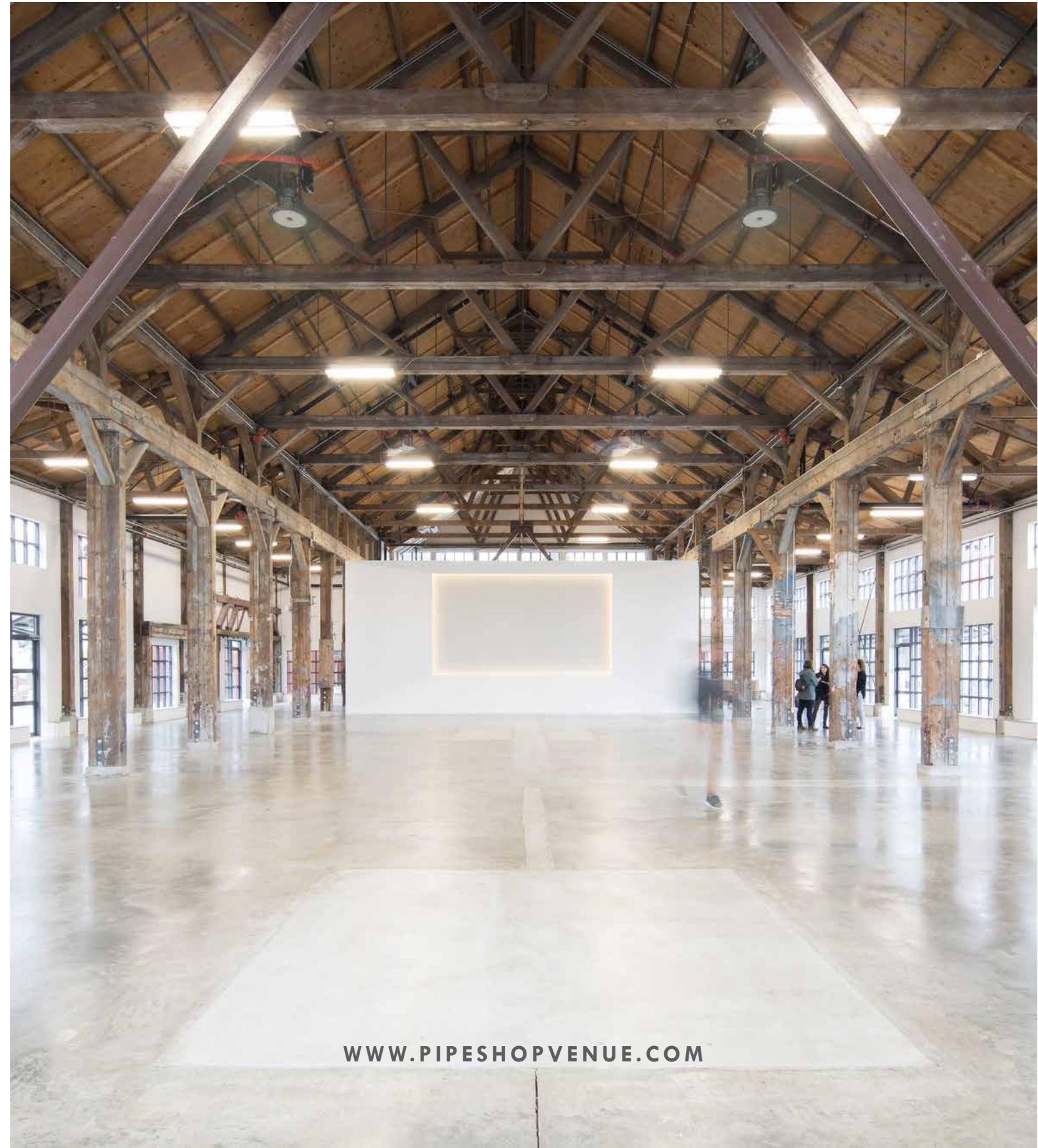


PIPE SHOP VENUE

— AT THE SHIPYARDS —



WWW.PIPESHOPVENUE.COM

RENTAL RATES



From small community gatherings, to large scale event activations, the Pipe Shop's open concept lends itself perfectly to suit your event's needs.

Private event: \$5800.00 + GST per day

Week day rate (Mon-Thurs): \$4500.00 + GST per day

To book outdoor space, including Shipbuilder's Square, visit www.cnv.org.

PAYMENT AND DEPOSIT

A \$500.00 non-refundable Booking Fee is required to confirm the booking, which will be applied against the full venue rental fee. A \$1,000.00 refundable Damage Deposit is payable upon signing the venue rental agreement. Full payment is due 60 days prior to the event. Cheques are preferred form of payment, we do not accept credit cards or e-transfers.

Rental rates and current policies are effective as of April 2019. Prices are subject to applicable taxes and gratuities and are subject to change. Quay Property Management reserves the right to change prices at any point.



LIABILITY INSURANCE

The occupant must obtain and show proof of \$5 million in general liability insurance and list Quay Property Management Corporation and The City of North Vancouver as an additional insurer.

RENTALS

The space is a blank canvas, it does not come with tables or chairs, there is no ladder on-site. Professional experienced wedding and/or event planners are required at each event, our preferred vendors are listed in this package.

BAR MANAGEMENT

Lavish Liquid Catering Ltd. is the exclusive bar service provider for weddings and corporate events at the Venue. If the Client intends to have alcoholic beverages present at the event in the Venue, the Client agrees to use Lavish Liquid Catering Ltd. as the bar service provider. If the Client wishes to use an alternate bar management company, they may be permitted to use one of our preferred caterers.

NOISE RESTRICTIONS

The Venue is located in a residential area, therefore, all events must end at 11:00 pm. Tear down of all items must take place that night and everything that was brought in must be removed by 12:30 am. The venue must be completely empty and in the same condition it was received, by 1:00 am at the latest.

PREFERRED VENDORS

WEDDING & EVENT PLANNERS

Clearwater Events & Weddings: www.clearwaterevents.org

Filosofi: info@filosofi.com

Petite Pearl: www.petitepearlevents.com

Smitten Events: info@smittenevents.ca

Sweetheart Events: savethedate@sweetheartevents.ca

RENTALS + DECOR

A & B Partytime Rentals Ltd.: sales@abpartytime.com

Bespoke Decor: hello@bespokedecor.ca

Bold Event Creative: heather@boldeventcreative.com

Debut Event Design: info@debuteventdesign.ca

Koncept Event Design: Koncept.vancouver@gmail.com

Lonsdale Event Rentals: events@lonsdaleevents.com

Lounge Works: simona@loungeworks.ca

Pedersen's Event Rentals: www.vancouver.pedersens.com

CATERING*

Cocktails & Canapes: www.cocktailsandcanapes.ca

Culinary Capers: www.culinarycapers.com

Drew's Catering: www.drewscatering.com

Forage: www.foragevancouver.com

Louis Gervais Catering: www.louisgervaiscatering.com

Peake of Catering: www.peakeofcatering.com

Pinnacle Hotel at the Pier: www.meetpinnacle.ca/ph/catering

Railtown Catering: www.railtowncatering.ca

Savoury Chef: www.savourychef.com

Served Catering: www.servedcatering.com

Truffles Fine Foods: www.trufflesfinefoods.com

White Table Catering: www.whitetablecatering.com

BAR SERVICE*

Lavish Liquid: www.lavishliquid.com

A/V

Clark's AV: www.clarksav.com

McHugh Productions: www.mchughproductions.com

Showkraft: www.showkraftps.com

ACCOMMODATION

Pinnacle Hotel at the Pier: www.pinnaclepierhotel.com

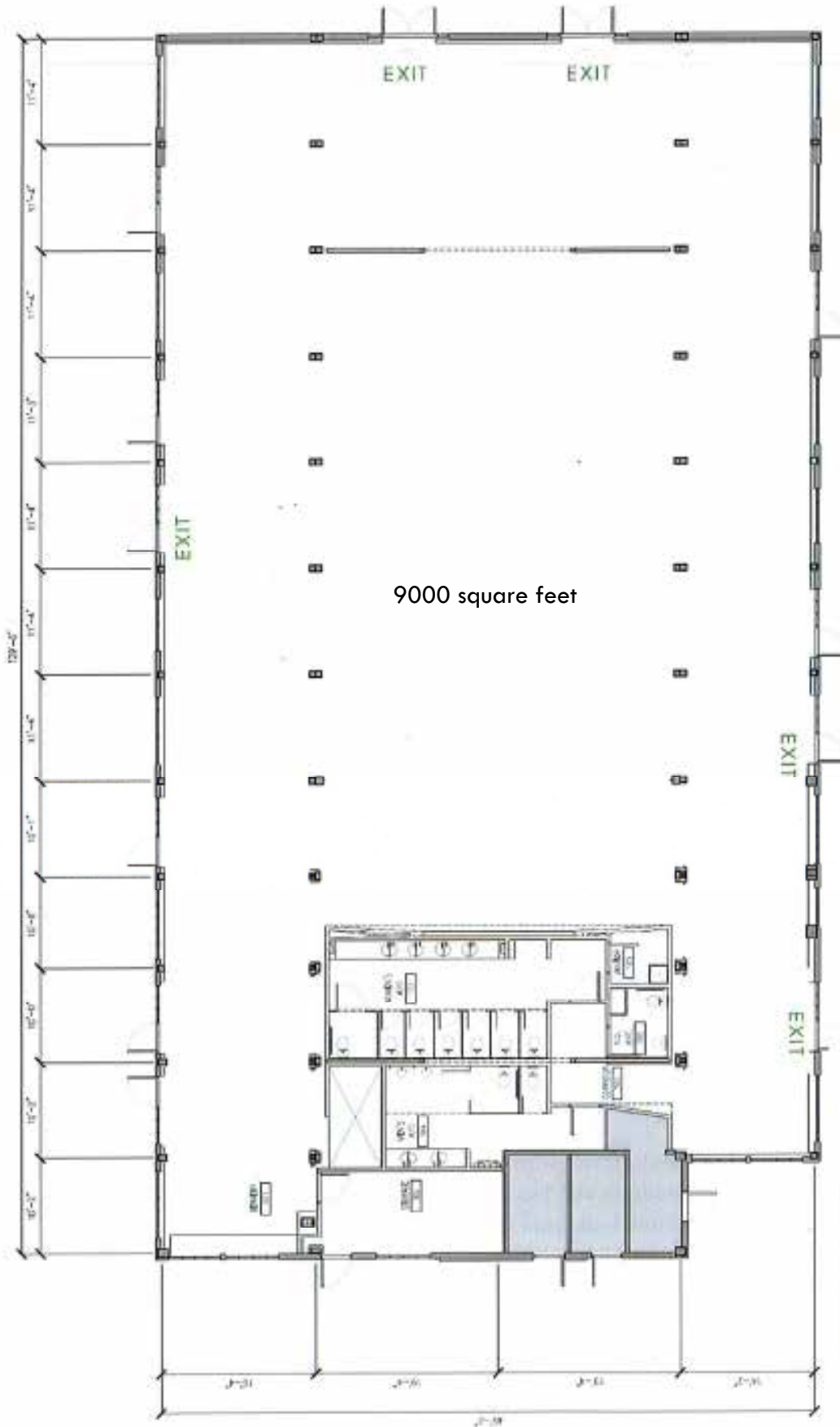
Seaside Executive Hotel: www.seasidehotelvancouver.com

Lonsdale Quay Hotel: www.lonsdalequayhotel.com

*Exclusive vendors, please inquire for more details.



FLOOR PLAN



9000 square feet

Additional measurements:
Width of the entire venue (East to West) 69'-2"
Length of entire venue (North to South) 127'-8"
In between the pillars (East to West) 39'
The basket frame size is a 14x9 aspect ratio at 17' high by 17'-6 1/16" wide.
The height, floor to beams 23 ft and floor to ceiling is 25 ft.

NEIGHBOURHOOD



LOWER LONSDALE - THE SHOPYARDS DISTRICT

Conveniently located on the waterfront, adjacent to the Pinnacle Hotel, Pier 7 restaurant and Tap & Barrel the Pipe Shop is a 5 minute walk from the SeaBus terminal and bus loop. Parking is available on Wallace Mews and in the Pinnacle Hotel.

THE CITY OF NORTH VANCOUVER

The completed development will provide over 84,000 square feet of mixed-use commercial and community amenity space, which will include a new boutique waterfront hotel, in addition to the public ice surface and water play area.

THE WALLACE

Our sister venue, The Wallace, is a beautiful industrial vene in The Shipyards. Featuring an expansive 2300 square foot terrace and a capacity of 200 guests, The Wallace has the best views in the City. Visit wallacevenue.com for more information.

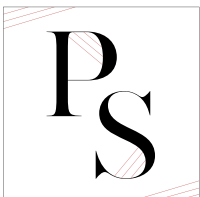


ABOUT



The Pipe Shop at The Shipyards is a spectacular 9,000 sq. ft. open concept space available for community events, retail markets, weddings, corporate events, photoshoots and more. Once known as the Pipefitters Building, where ships piping systems were constructed, the Pipe Shop Venue is an exquisite restored heritage building located in the heart of Lower Lonsdale. With an abundance of natural light, original wooden beams, concrete floors and festoon lighting installed, the Pipe Shop Venue is the perfect mix of industrial chic.





115 Victory Ship Way, North Vancouver
604.676.4063 | www.pipeshopvenue.com
[@pipeshop_venue](https://www.instagram.com/pipeshop_venue)

Owned By:  Managed By: 